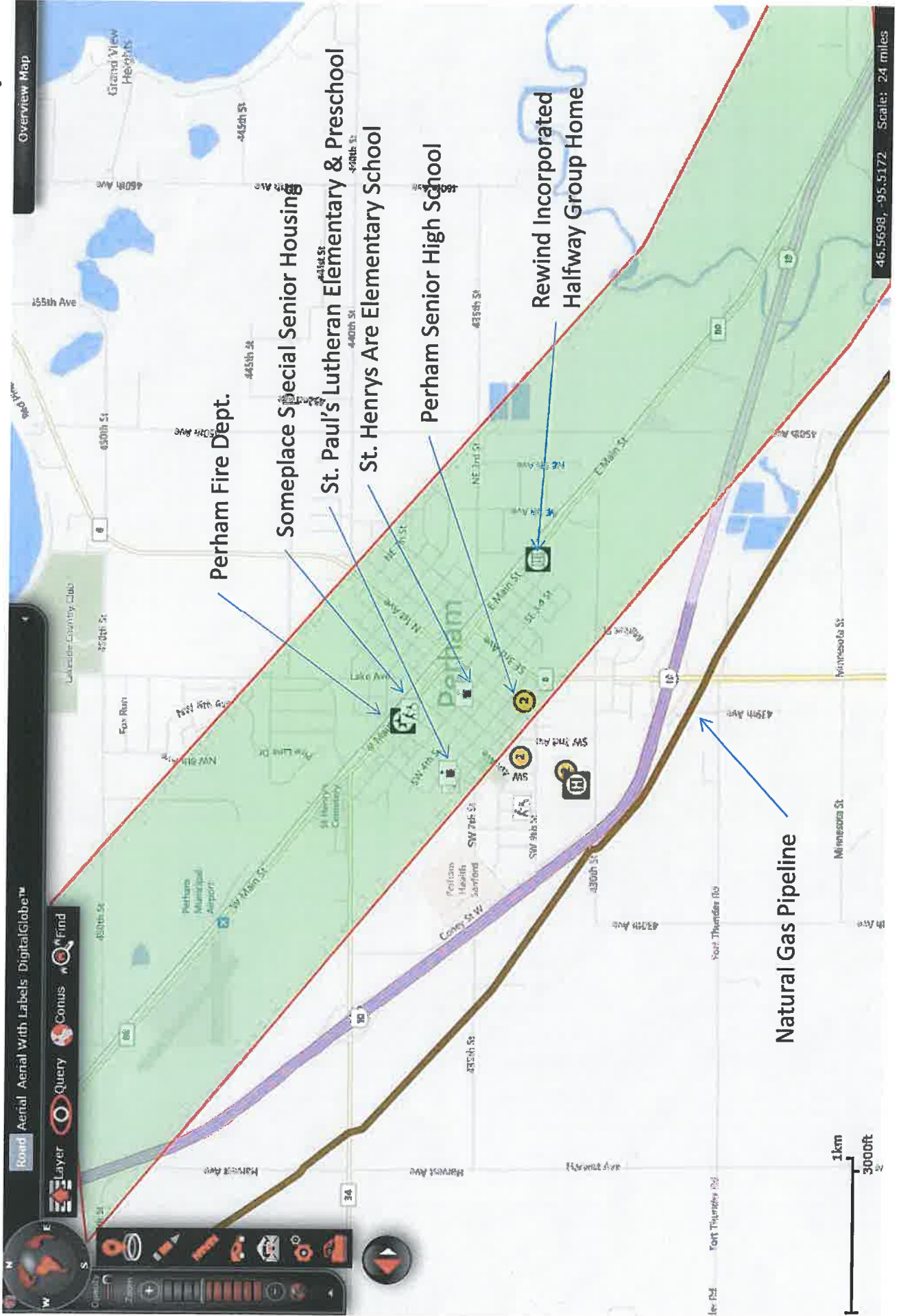
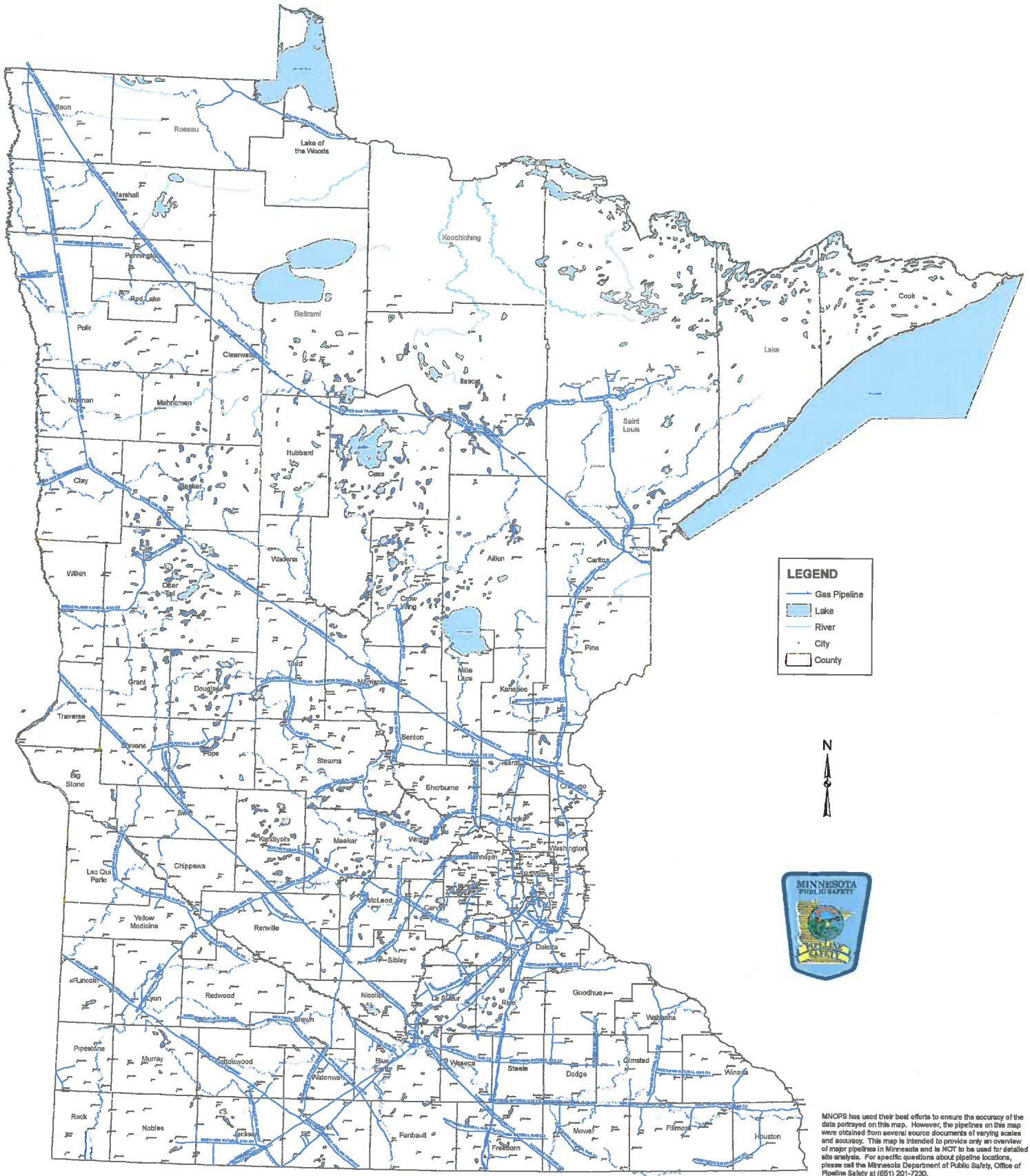


Perham (shaded area 1/2 mile either side of tracks)



**MINNESOTA DEPARTMENT OF PUBLIC SAFETY
OFFICE OF PIPELINE SAFETY
MAJOR GAS PIPELINES**



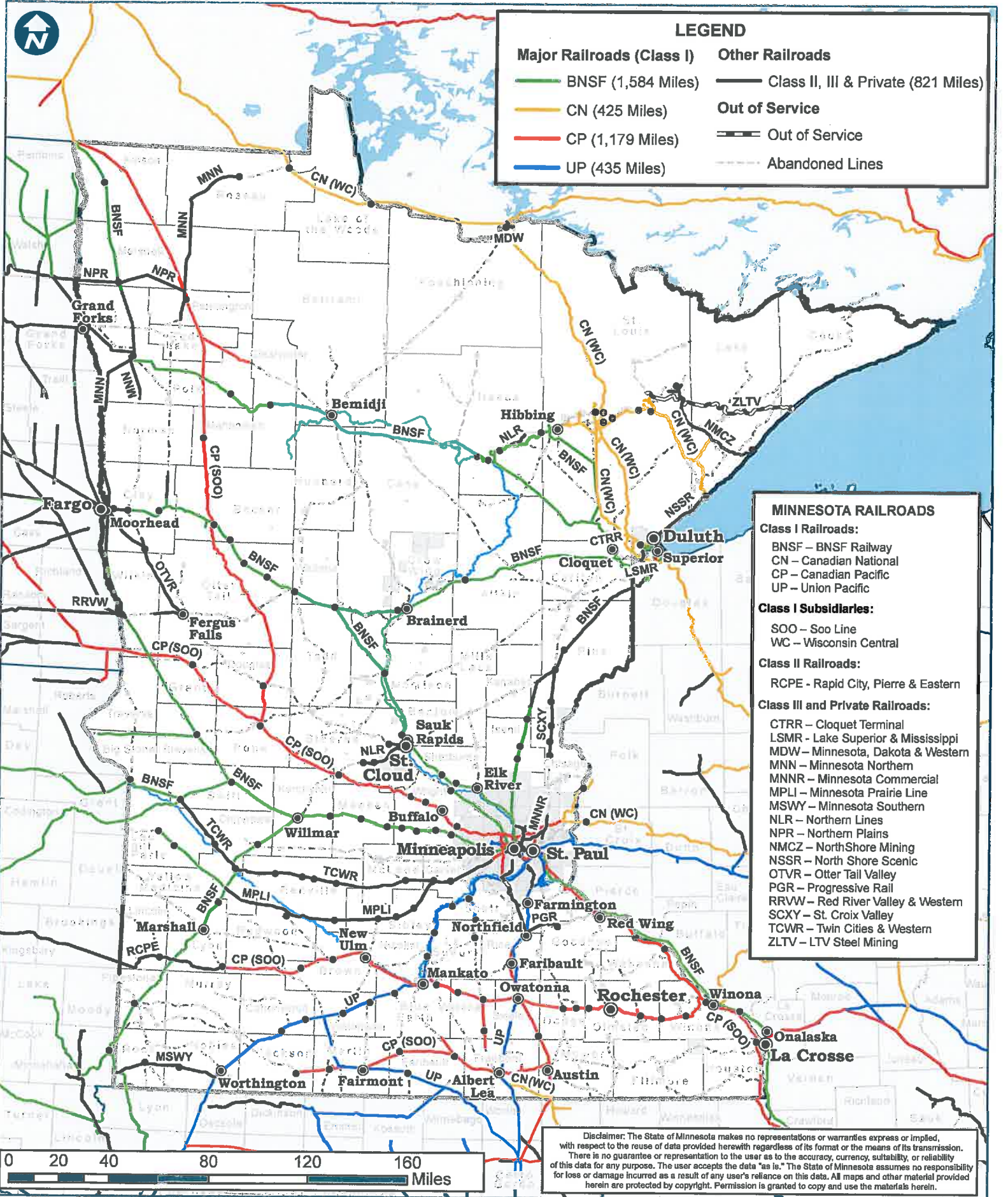
MINOPS has used their best efforts to ensure the accuracy of the data portrayed on this map. However, the pipelines on this map were obtained from several source documents of varying scales and accuracy. This map is intended to provide only an overview of major pipelines in Minnesota and is NOT to be used for detailed site analysis. For specific questions about pipeline locations, please call the Minnesota Department of Public Safety, Office of Pipeline Safety at (651) 201-7230.



MINNESOTA FREIGHT RAILROAD MAP

Office of Freight and Commercial Vehicle Operations

December 2014



LEGEND

Major Railroads (Class I)	Other Railroads
— BNSF (1,584 Miles)	 Class II, III & Private (821 Miles)
— CN (425 Miles)	 Out of Service
— CP (1,179 Miles)	 Out of Service
— UP (435 Miles)	 Abandoned Lines

MINNESOTA RAILROADS

Class I Railroads:
 BNSF – BNSF Railway
 CN – Canadian National
 CP – Canadian Pacific
 UP – Union Pacific

Class I Subsidiaries:
 SOO – Soo Line
 WC – Wisconsin Central

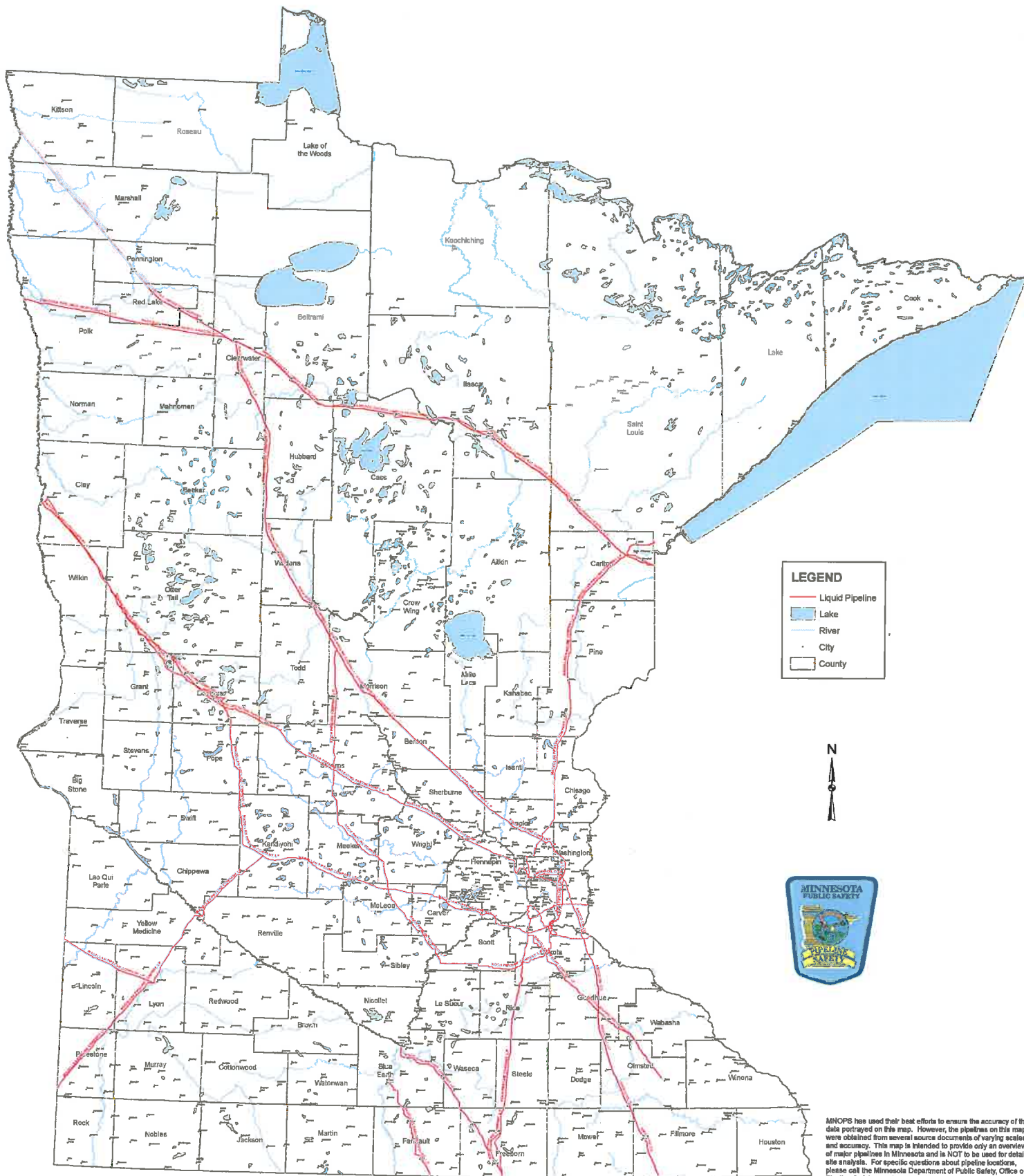
Class II Railroads:
 RCPE - Rapid City, Pierre & Eastern

Class III and Private Railroads:
 CTRR – Cloquet Terminal
 LSMR - Lake Superior & Mississippi
 MDW – Minnesota, Dakota & Western
 MNN – Minnesota Northern
 MNNR – Minnesota Commercial
 MPLI – Minnesota Prairie Line
 MSWY – Minnesota Southern
 NLR – Northern Lines
 NPR – Northern Plains
 NMCZ – NorthShore Mining
 NSSR – North Shore Scenic
 OTVR – Otter Tail Valley
 PGR – Progressive Rail
 RRWW – Red River Valley & Western
 SCXY – St. Croix Valley
 TCWR – Twin Cities & Western
 ZLTV – LTV Steel Mining



Disclaimer: The State of Minnesota makes no representations or warranties express or implied, with respect to the route of data provided herewith regardless of its format or the means of its transmission. There is no guarantee or representation to the user as to the accuracy, currency, suitability, or reliability of this data for any purpose. The user accepts the data "as is." The State of Minnesota assumes no responsibility for loss or damage incurred as a result of any user's reliance on this data. All maps and other material provided herein are protected by copyright. Permission is granted to copy and use the materials herein.

**MINNESOTA DEPARTMENT OF PUBLIC SAFETY
OFFICE OF PIPELINE SAFETY
MAJOR LIQUID PIPELINES**



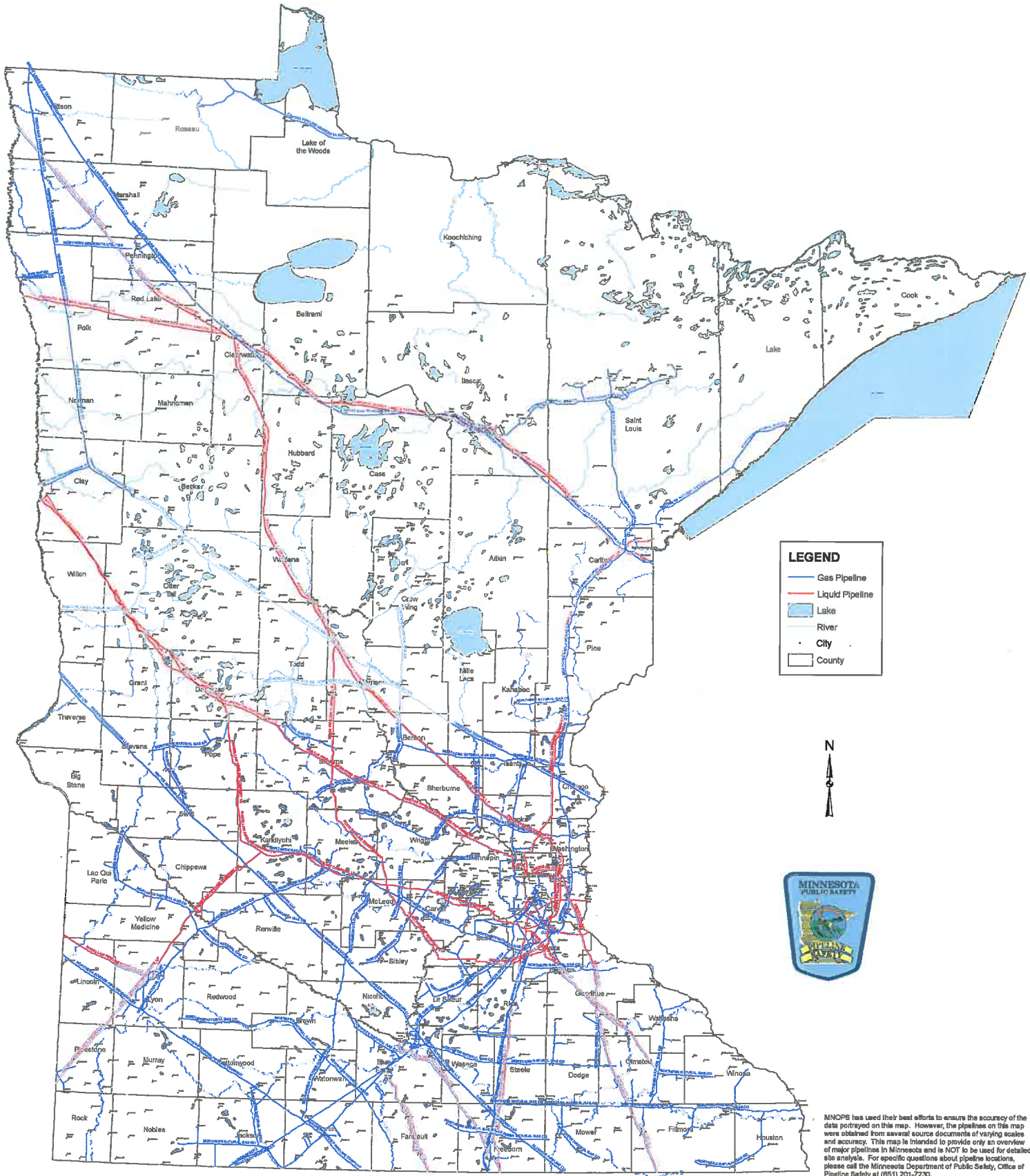
LEGEND

- Liquid Pipeline
- Lake
- River
- City
- County



MINOPS has used their best efforts to ensure the accuracy of the data portrayed on this map. However, the pipelines on this map were obtained from several source documents of varying scales and accuracy. This map is intended to provide only an overview of major pipelines in Minnesota and is NOT to be used for detailed site analysis. For specific questions about pipeline locations, please call the Minnesota Department of Public Safety, Office of Pipeline Safety at (651) 201-7230.

**MINNESOTA DEPARTMENT OF PUBLIC SAFETY
OFFICE OF PIPELINE SAFETY
MAJOR GAS AND LIQUID PIPELINES**



LEGEND

- Gas Pipeline
- Liquid Pipeline
- Lake
- River
- City
- County



MINNOPS has used their best efforts to ensure the accuracy of the data portrayed on this map. However, the pipelines on this map were obtained from several source documents of varying scales and accuracy. This map is intended to provide only an overview of major pipelines in Minnesota and is NOT to be used for detailed site analysis. For specific questions about pipeline locations, please call the Minnesota Department of Public Safety, Office of Pipeline Safety at (651) 201-7230.